



PINAL COUNTY

WIDE OPEN OPPORTUNITY

Pinal County Strategic Transportation Safety Plan

Public Meeting July 12, 2018



Safety Plan Objectives



Save lives and reduce serious injuries

- ▶ Identify emphasis areas, safety strategies, and safety projects
- ▶ 4 E's of safety:
 - ▶ Engineering
 - ▶ Enforcement
 - ▶ Education
 - ▶ Emergency services



Why the 4 E's?



95% of crashes involve behavior factors

Statewide Fatalities:

- ▶ 50% not using seat belt, child safety seat, helmet
- ▶ 38% involved speeding
- ▶ 34% involved impaired driving

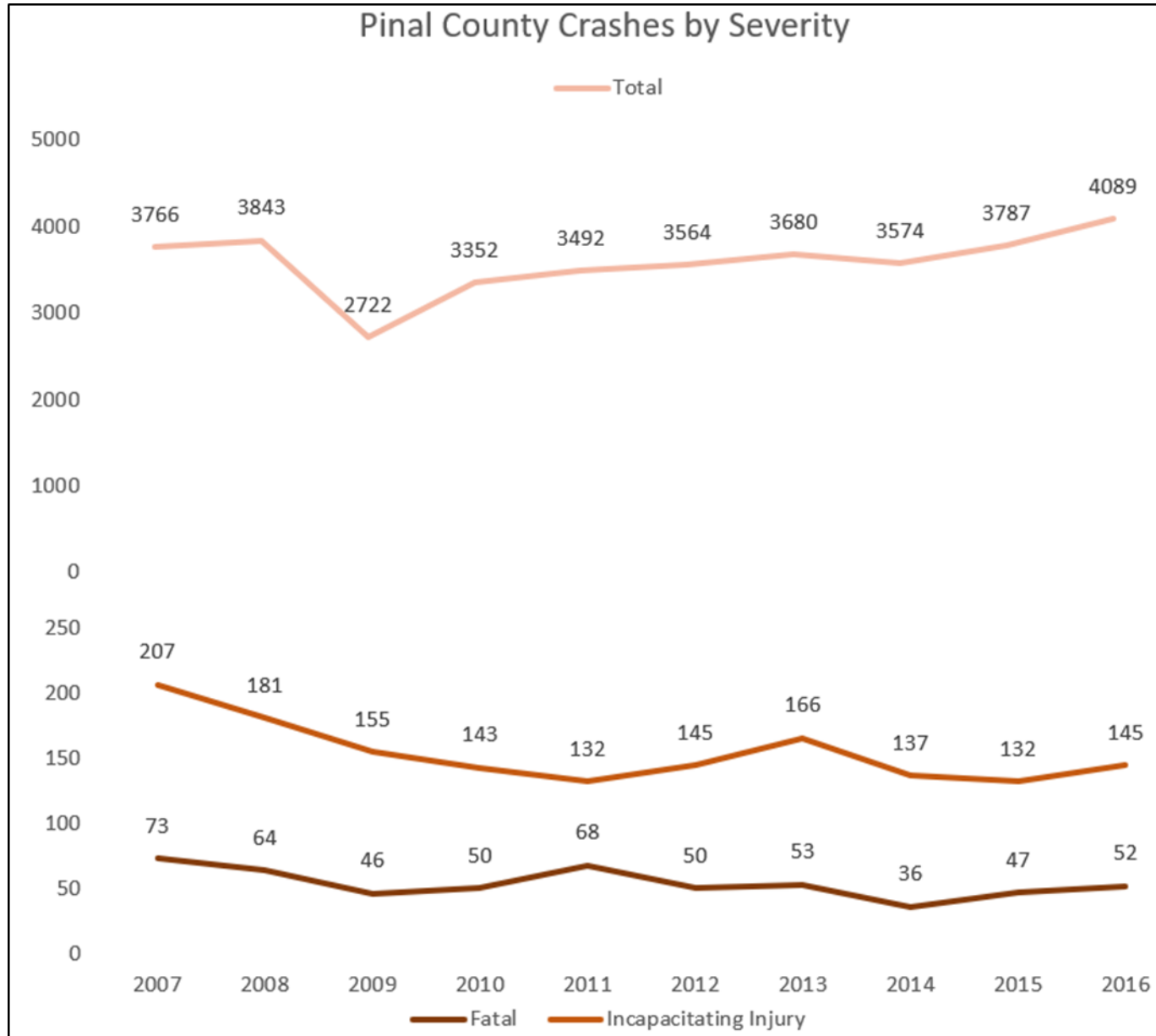
Crash Data Overview



Pinal County crashes for past 10 years (2007 – 2016):

- ▶ 35,869 crashes
- ▶ 539 fatal crashes
- ▶ 1,543 serious injury crashes
- ▶ 33,787 minor/no injury crashes

Crash Trends



Crash Data Analysis



Most **frequent crash** types:

- ▶ 29% rear-end
- ▶ 28% single vehicle
- ▶ 12% angle
- ▶ 9% sideswipe same direction
- ▶ 8% left-turn

Crash Data Analysis



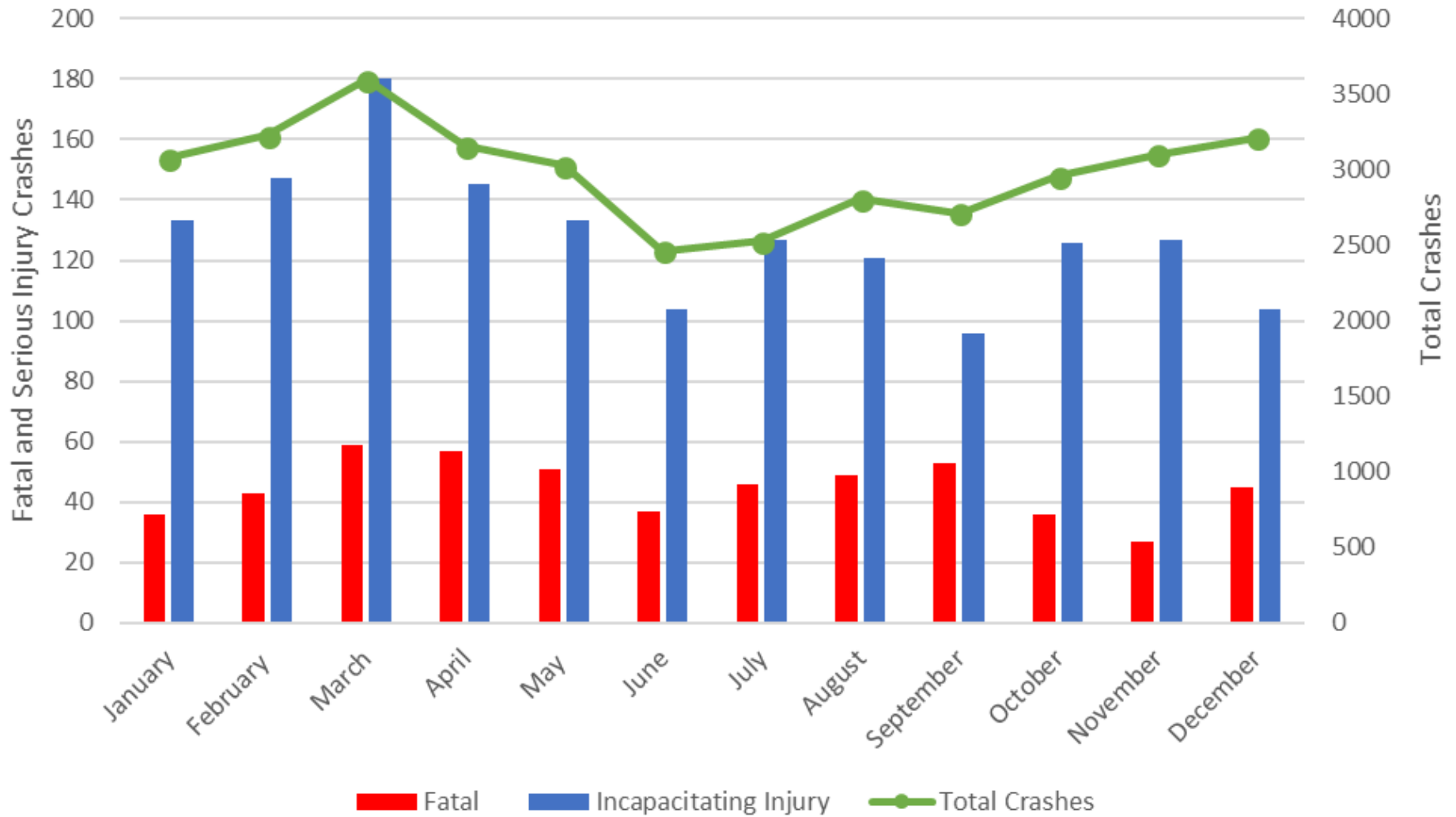
Most frequent **fatal crash** types:

- ▶ 44% single vehicle
- ▶ 13% pedestrian
- ▶ 13% head-on
- ▶ 9% angle
- ▶ 7% rear-end

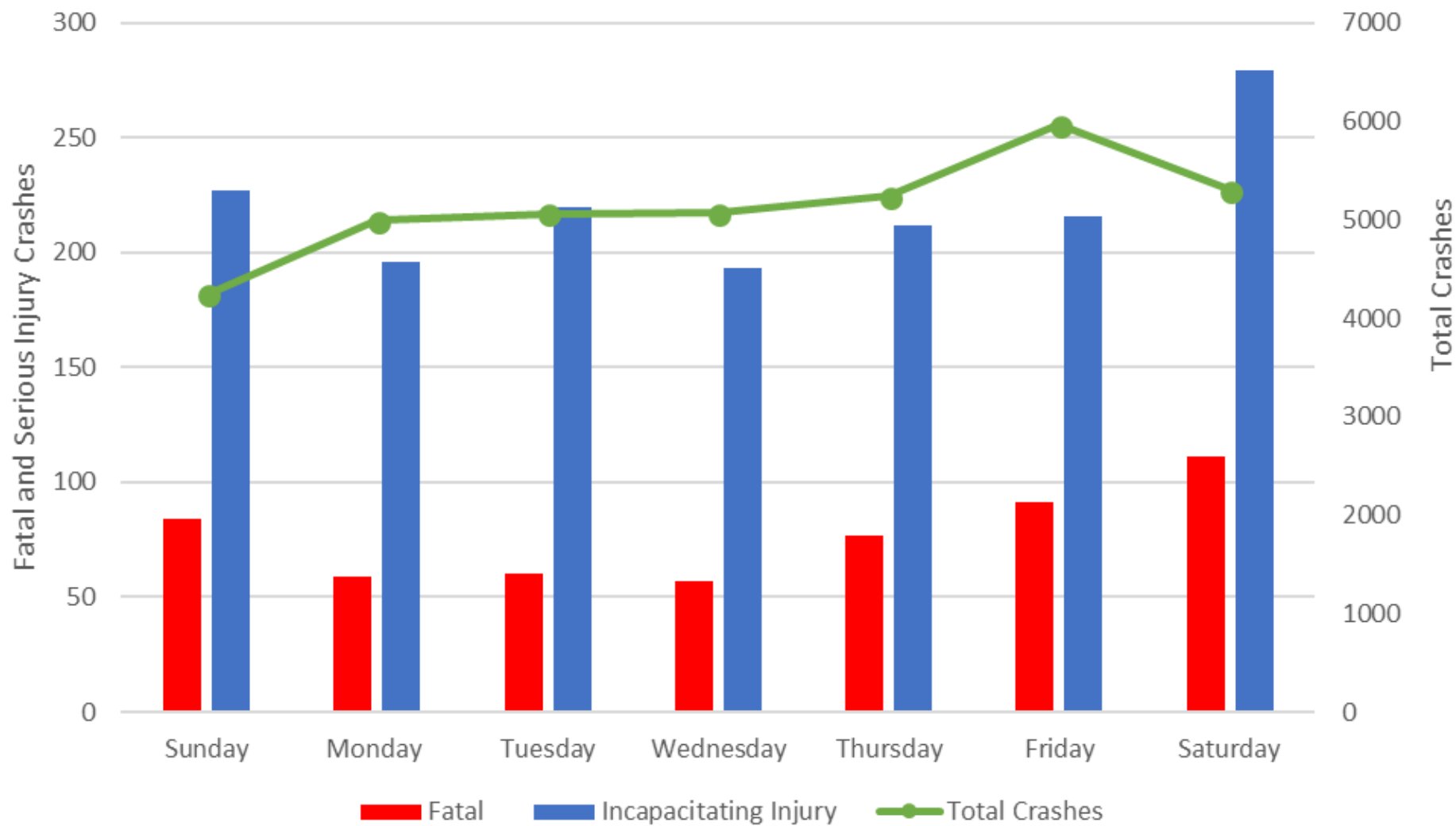
Crash Type by Severity

Collision Manner	Non-					Total
	Fatal	Incapacitating Injury	Incapacitating Injury	Possible Injury	No Injury	
Rear End	39	251	1061	1726	7281	10358
Single Vehicle	239	627	1566	1102	6585	10119
Angle	49	187	608	833	2768	4445
Sideswipe Same Direction	14	58	184	195	2848	3299
Left Turn	22	153	445	614	1797	3031
Other	21	59	150	167	1427	1824
Rear To Side	0	3	5	17	631	656
Sideswipe Opposite Direction	6	23	75	81	442	627
Head On	68	64	96	84	242	554
Bicycle	12	40	136	145	80	413
Pedestrian	69	76	125	72	52	394
Rear To Rear	0	2	16	15	116	149
Total	539	1543	4467	5051	24269	35869

Crashes by Month and Severity



Crashes by Day and Severity



Crashes by Hour and Severity



Crashes in Agency Boundaries

Collision Manner	Fatal	Incapacitating Injury	Non Incapacitating Injury	Possible Injury	No Injury	Total
Ak-Chin Indian Community	6	3	13	6	41	69
Apache Junction	46	181	486	793	2869	4375
Arizona City	2	8	19	38	94	161
Casa Grande	64	198	914	1322	5927	8425
Coolidge	23	62	200	268	1203	1756
Eloy	23	51	170	156	863	1263
Florence	10	42	99	128	596	875
Gila River Indian Community	110	199	616	499	2783	4207
Kearny	1	1	5	4	19	30
Mammoth	0	4	0	3	11	18
Maricopa	24	50	236	293	1422	2025
Queen Creek	3	3	7	16	70	99
San Tan Valley	13	139	297	406	1887	2742
Superior	2	8	5	8	56	79
Tohono O'odham Nation	5	3	9	11	24	52
Unincorporated Pinal County	207	591	1391	1100	6404	9693
Total	539	1543	4467	5051	24269	35869

City of Maricopa Crashes

Maricopa	Non-						Total
	Fatal	Incapacitating Injury	Incapacitating Injury	Possible Injury	No Injury		
Rear End	2	8	68	129	611	818	
Single Vehicle	12	13	50	41	167	283	
Left Turn	1	8	37	42	153	241	
Sideswipe Same Direction		4	7	9	191	211	
Angle	2	2	29	33	130	196	
Other		1	5	6	49	61	
Head On	1	7	6	6	18	38	
Sideswipe Opposite Direction	1		4	4	27	36	
Rear to Side					35	35	
Bicyclist	1	5	15	11	3	35	
Unknown	1		1	3	23	28	
Pedestrian	3	2	11	5	1	22	
Rear to Rear			3	4	14	21	
Total	24	50	236	293	1422	2025	



SR 347 CRASHES



SR347 Incidents - Peters & Nall Rd to I-10.kmz



LOCATE YOUR CONCERNS

Online Mapping

Next Steps



- ▶ Determine emphasis areas
- ▶ Develop safety strategies
- ▶ Conduct network screening to identify priority locations
- ▶ Identify and develop safety projects

Contacts



Kathy Borquez

Pinal County

(520) 432-5301

Kathy.Borquez@pinalcountyz.gov

Jason Hafner

Sun Corridor Metropolitan Planning Organization

(520) 705-5153

jhafner@scmpo.org

Mike Blankenship, P.E.

Greenlight Traffic Engineering

(623) 308-6523

mikeb@greenlightte.com

Thank You!

