



**PINAL COUNTY**  
WIDE OPEN OPPORTUNITY

# Pinal County Strategic Transportation Safety Plan Public Meeting July 31, 2018



# Safety Plan Objectives



## Save lives and reduce serious injuries

- ▶ Identify emphasis areas, safety strategies, and safety projects
- ▶ 4 E's of safety:
  - ▶ Engineering
  - ▶ Enforcement
  - ▶ Education
  - ▶ Emergency services



# Why the 4 E's?



**95% of crashes involve behavior factors**

**Statewide Fatalities:**

- ▶ 50% not using seat belt, child safety seat, helmet
- ▶ 38% involved speeding
- ▶ 34% involved impaired driving

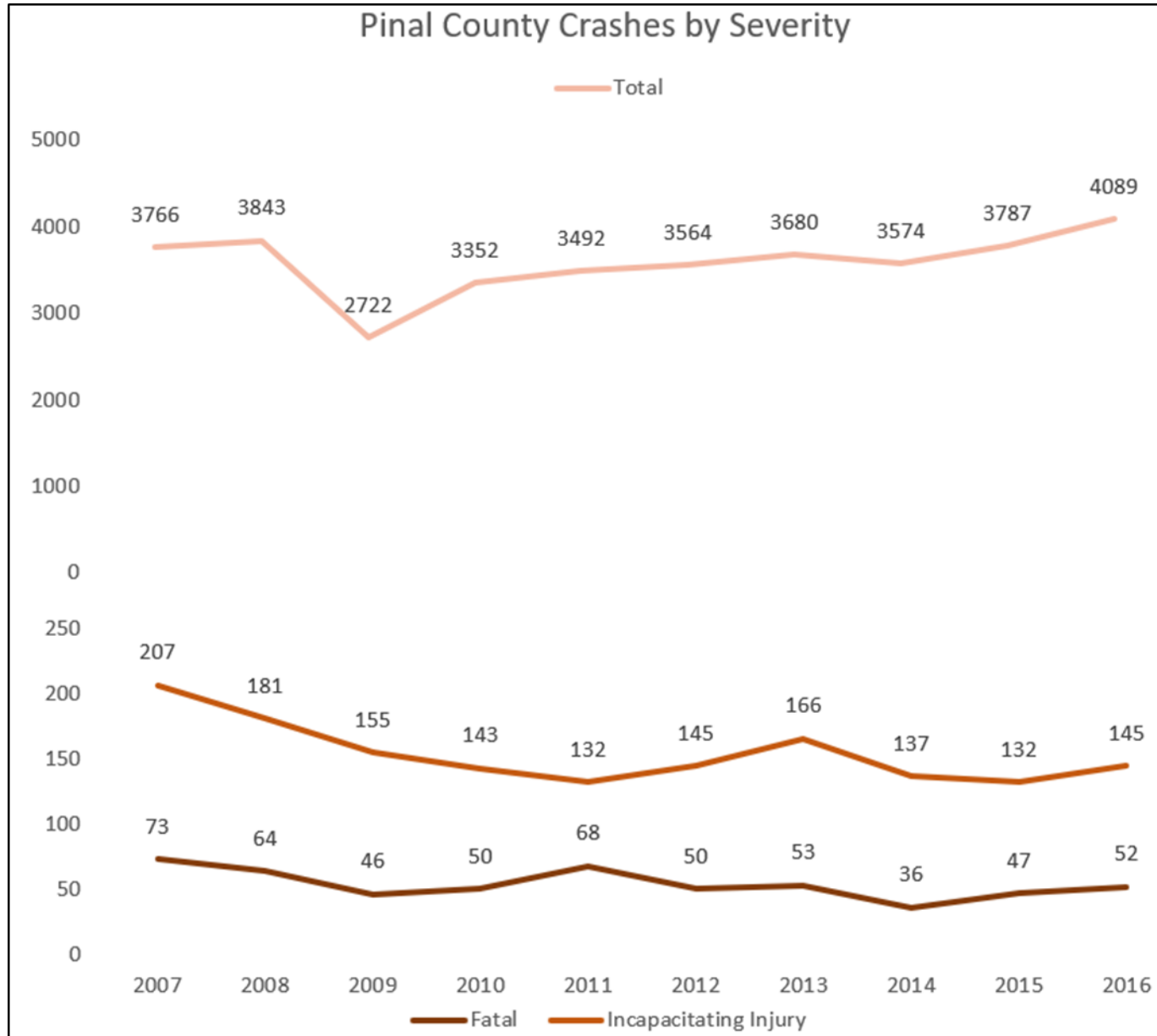
# Crash Data Overview



Pinal County crashes for past 10 years (2007 – 2016):

- ▶ 35,869 crashes
- ▶ 539 fatal crashes
- ▶ 1,543 serious injury crashes
- ▶ 33,787 minor/no injury crashes

# Crash Trends



# Crash Data Analysis



Most **frequent crash** types:

- ▶ 29% rear-end
- ▶ 28% single vehicle
- ▶ 12% angle
- ▶ 9% sideswipe same direction
- ▶ 8% left-turn

# Crash Data Analysis



Most frequent **fatal crash** types:

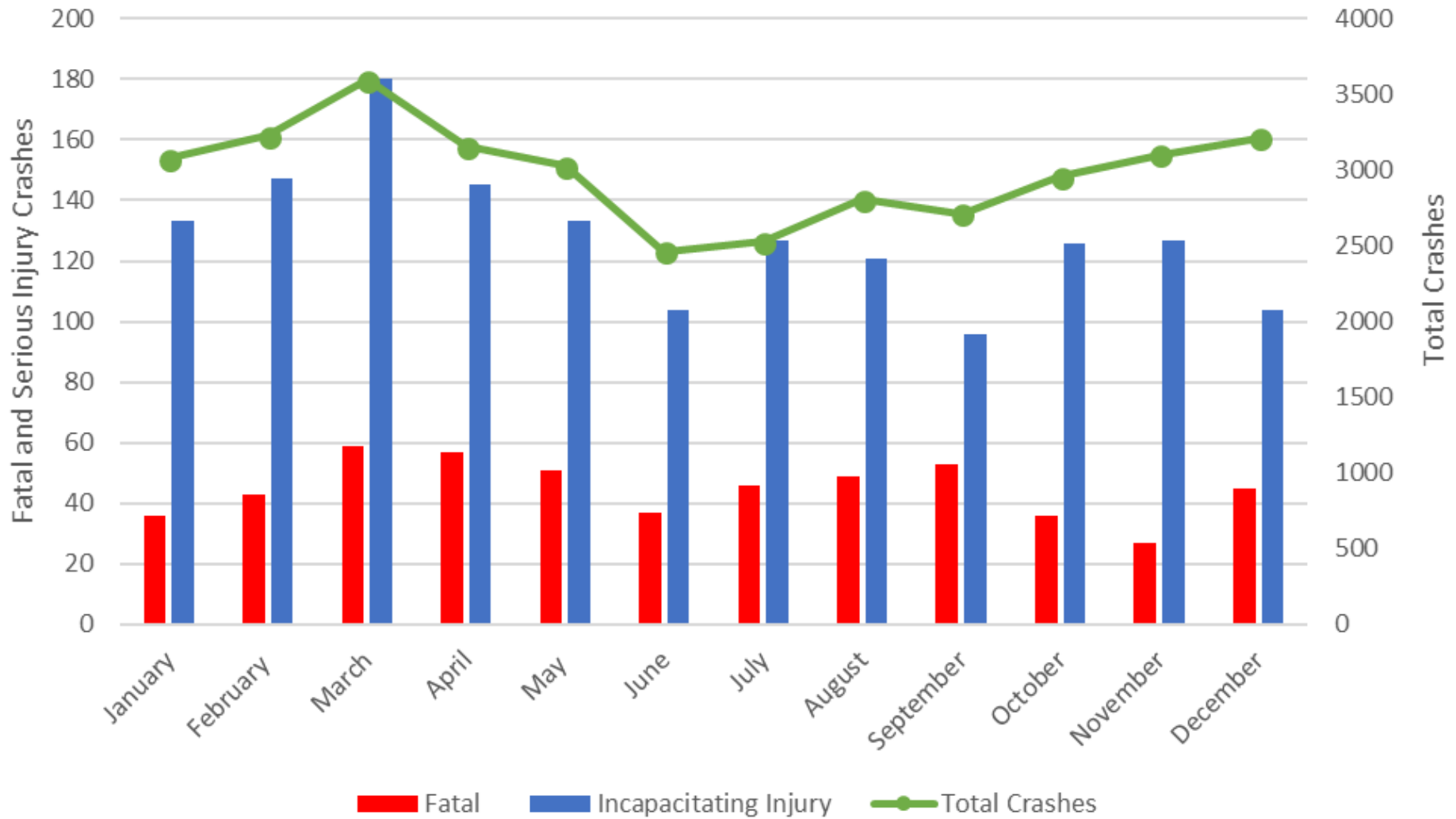
- ▶ 44% single vehicle
- ▶ 13% pedestrian
- ▶ 13% head-on
- ▶ 9% angle
- ▶ 7% rear-end

# Crash Type by Severity

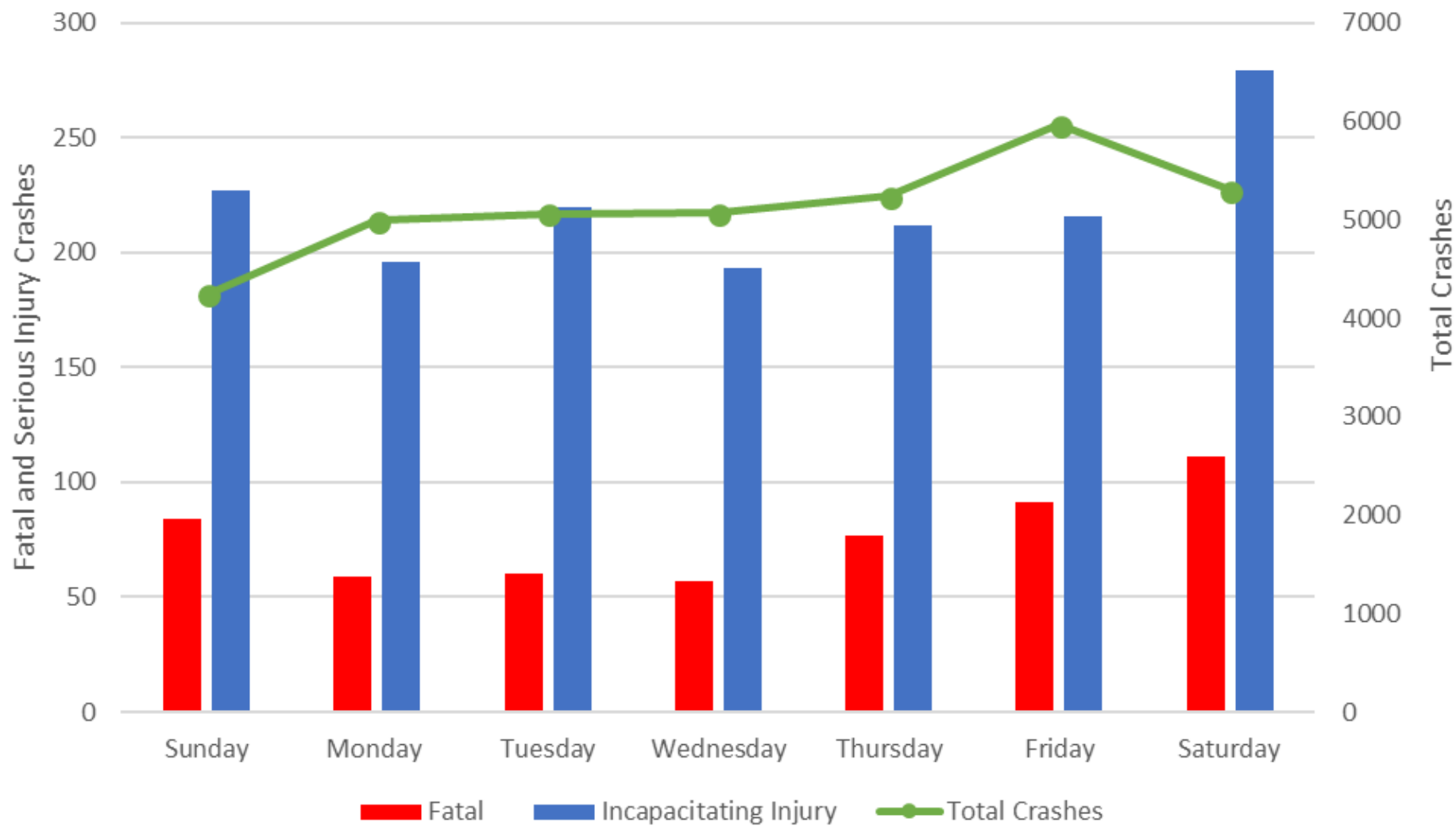
Collision Manner	Non-					Total
	Fatal	Incapacitating Injury	Incapacitating Injury	Possible Injury	No Injury	
Rear End	39	251	1061	1726	7281	10358
Single Vehicle	239	627	1566	1102	6585	10119
Angle	49	187	608	833	2768	4445
Sideswipe Same Direction	14	58	184	195	2848	3299
Left Turn	22	153	445	614	1797	3031
Other	21	59	150	167	1427	1824
Rear To Side	0	3	5	17	631	656
Sideswipe Opposite Direction	6	23	75	81	442	627
Head On	68	64	96	84	242	554
Bicycle	12	40	136	145	80	413
Pedestrian	69	76	125	72	52	394
Rear To Rear	0	2	16	15	116	149
<b>Total</b>	<b>539</b>	<b>1543</b>	<b>4467</b>	<b>5051</b>	<b>24269</b>	<b>35869</b>



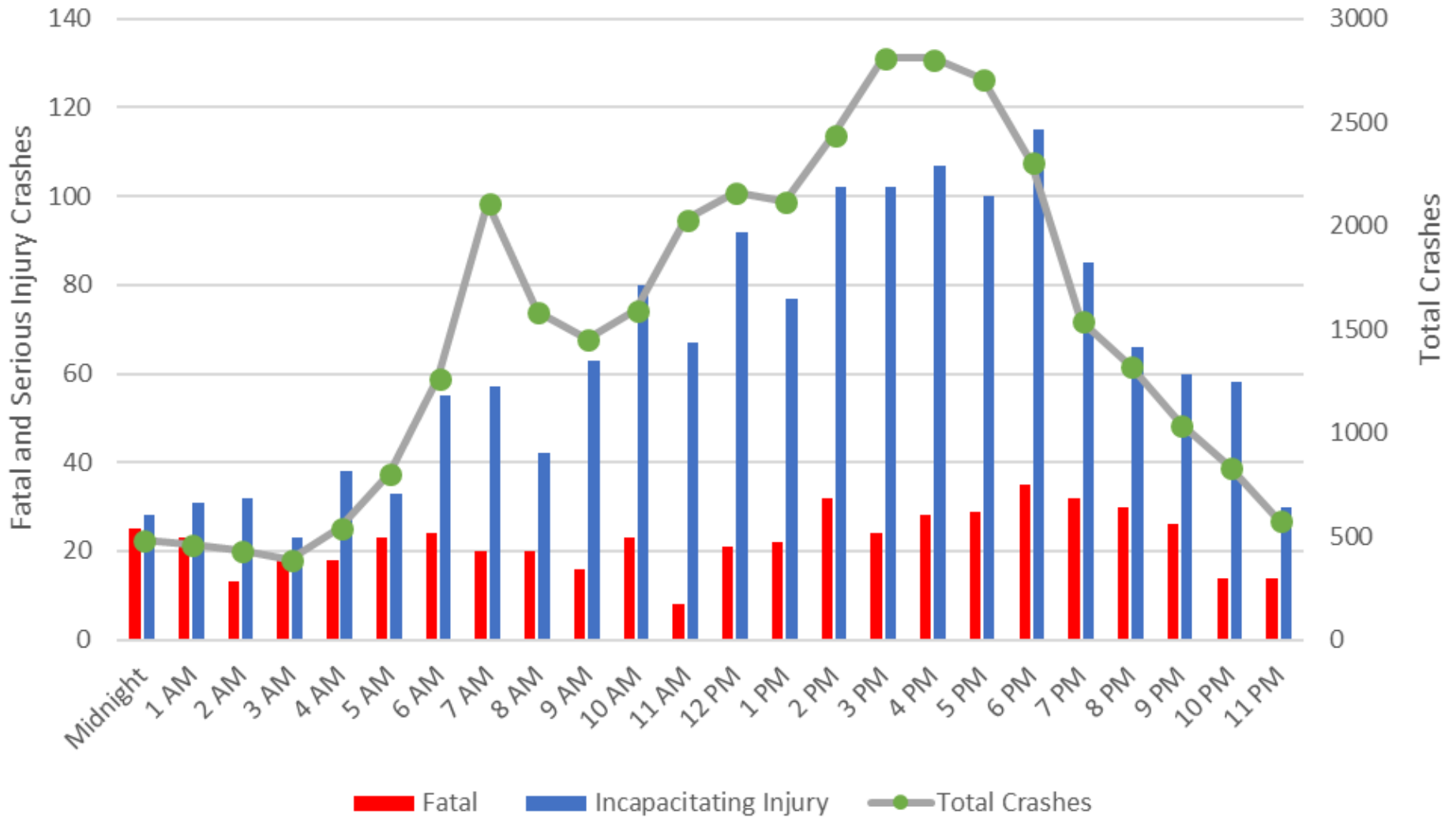
# Crashes by Month and Severity



## Crashes by Day and Severity



# Crashes by Hour and Severity



# Crashes in Agency Boundaries

Collision Manner	Fatal	Incapacitating Injury	Non Incapacitating Injury	Possible Injury	No Injury	Total
Ak-Chin Indian Community	6	3	13	6	41	69
Apache Junction	46	181	486	793	2869	4375
Arizona City	2	8	19	38	94	161
Casa Grande	64	198	914	1322	5927	8425
Coolidge	23	62	200	268	1203	1756
Eloy	23	51	170	156	863	1263
Florence	10	42	99	128	596	875
Gila River Indian Community	110	199	616	499	2783	4207
Kearny	1	1	5	4	19	30
Mammoth	0	4	0	3	11	18
Maricopa	24	50	236	293	1422	2025
Queen Creek	3	3	7	16	70	99
San Tan Valley	13	139	297	406	1887	2742
Superior	2	8	5	8	56	79
Tohono O'odham Nation	5	3	9	11	24	52
Unincorporated Pinal County	207	591	1391	1100	6404	9693
Total	539	1543	4467	5051	24269	35869

# San Tan Valley Crashes

Crash Type	Incapacitating		Non-Incapacitating		Possible	No	Total
	Fatal	Injury	Injury	Injury	Injury	Injury	
Rear End	1	24	81	155	632	893	
Left Turn	2	34	73	86	280	475	
Single Vehicle	4	30	45	43	228	350	
Angle	1	17	44	57	230	349	
Sideswipe Same Direction		8	9	13	231	261	
Other	1	4	6	8	66	85	
Head On		6	8	15	37	66	
Rear to Side		2	1		63	66	
Sideswipe Opposite Direction		2	5	6	52	65	
Unknown		1	3	4	49	57	
Pedestrian	4	7	10	8	4	33	
Bicyclist		3	10	11	5	29	
Rear to Rear		1	2		10	13	
<b>Total</b>	<b>13</b>	<b>139</b>	<b>297</b>	<b>406</b>	<b>1887</b>	<b>2742</b>	

# Apache Junction Crashes

Crash Type	Incapacitating		Non-Incapacitating		Possible Injury	No Injury	Total
	Fatal	Injury	Injury	Injury			
Rear End	4	25	112	233	887	1261	
Angle	9	41	126	213	659	1048	
Single Vehicle	11	47	74	94	408	634	
Left Turn	3	18	58	101	242	422	
Sideswipe Same Direction	1	7	17	28	365	418	
Other	2	7	16	23	110	158	
Bicyclist	2	14	39	44	26	125	
Pedestrian	8	15	24	21	11	79	
Head On	6	6	12	14	23	61	
Sideswipe Opposite Direction		1	6	12	40	59	
Rear to Side				2	55	57	
Unknown			1	8	33	42	
Rear to Rear			1		10	11	
<b>Total</b>	<b>46</b>	<b>181</b>	<b>486</b>	<b>793</b>	<b>2869</b>	<b>4375</b>	

# Queen Creek Crashes

Crash Type	Non-					Total	
	Fatal	Incapacitating Injury	Incapacitating Injury	Possible Injury	No Injury		
Rear End			1	3	5	30	39
Left Turn	1		1		4	13	19
Angle				2	2	10	14
Single Vehicle	1		1	1	2	5	10
Sideswipe Same Direction					1	8	9
Head On						2	2
Pedestrian	1			1			2
Sideswipe Opposite Direction					1		1
Rear to Side						1	1
Other						1	1
Unknown					1		1
<b>Total</b>	<b>3</b>		<b>3</b>	<b>7</b>	<b>16</b>	<b>70</b>	<b>99</b>



# LOCATE YOUR CONCERNS

## Online Mapping



# Safety Projects



- ▶ Hunt Highway, Gary Rd to Bella Vista Rd (\$761,000)
- ▶ Gantzel Road, Ocotillo Rd to Combs Rd (\$634,000)
  - ▶ Flashing yellow arrows, median modifications for improved sight distance, sidewalk

# Next Steps



- ▶ Determine emphasis areas
- ▶ Develop safety strategies
- ▶ Conduct network screening to identify priority locations
- ▶ Identify and develop safety projects

# Contacts



**Kathy Borquez**

**Pinal County**

**(520) 432-5301**

**[Kathy.Borquez@pinalcountyz.gov](mailto:Kathy.Borquez@pinalcountyz.gov)**

**Jason Hafner**

**Sun Corridor Metropolitan Planning Organization**

**(520) 705-5153**

**[jhafner@scmpo.org](mailto:jhafner@scmpo.org)**

**Mike Blankenship, P.E.**

**Greenlight Traffic Engineering**

**(623) 308-6523**

**[mikeb@greenlightte.com](mailto:mikeb@greenlightte.com)**

**Thank You!**

